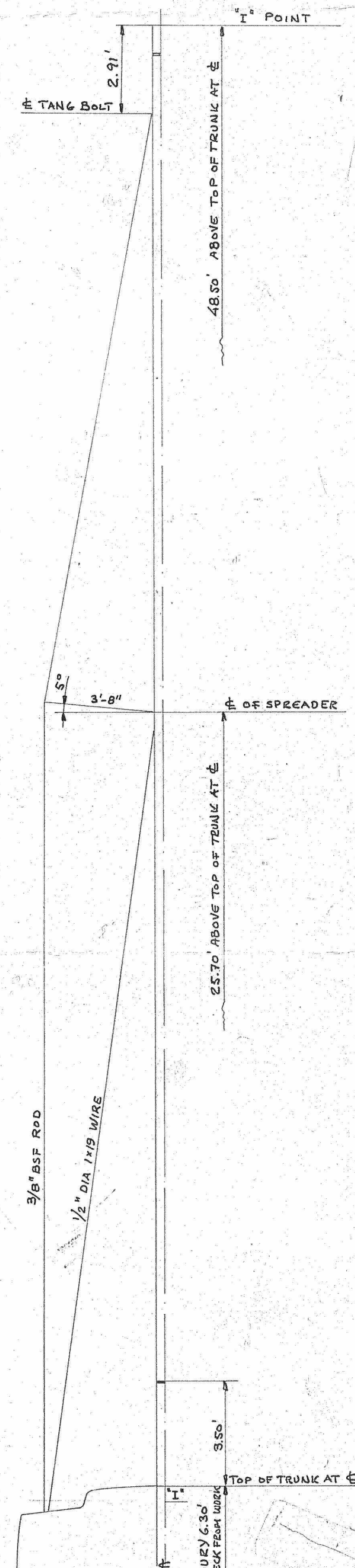


SAIL	WT	M.P.H.	FOOT	LUFF	AREA	REMARKS
MAINSAIL	7.5	SEE	SAIL	PLAN		ROLLER REEFING - 2 ZIPPERS
STORM TRYSAIL	7	-	12	18	105	ROPE TACK PENN.
10' FT. N° 6 STORM JIB	7	40-50	10	25	96	2 FT. TACK PENN. & 22 FT. HEAD PEN.
15 FT. N° 5 JIB	7	40-30	15	36	245	HEAD PENN. STRETCHY
20 FT. N° 4 JIB	7	22-30	20	43	404	HEAD PENN. STRETCHY
25 FT. N° 3 GENOA	5.5	15-22	25	49	582	150% LP STRETCHY
25/26 FT. N° 2 GENOA	4.5	10-15	25/26.6	49.4 MAX	594/633	150% LP MIN. 160% LP MAX AS DESIRED STRETCHY
25/26 FT. N° 1 GENOA	3	4-10	25/26.6	49.4	594/633	SETS FLYING 150% LP MIN 160% LP MAX AS DESIRED WIRE LUFF
25.5 FT. DRIFTER	1.5	0-4	25.5	49.4	593	SETS FLYING 150% LP WIRE LUFF
SPIN STAYSAIL	2.2	-	10	42	164	
STORM SPIN.	1.5	-	RULE	90% RULE	-	60% 1/3 GIRTH 90% 2/3 GIRTH
HWX SPIN.	1.5	-	RULE	MAX	-	
LIGHT SPIN.	0.75	-	RULE	MAX	-	

MAST RAKES 6" AFT

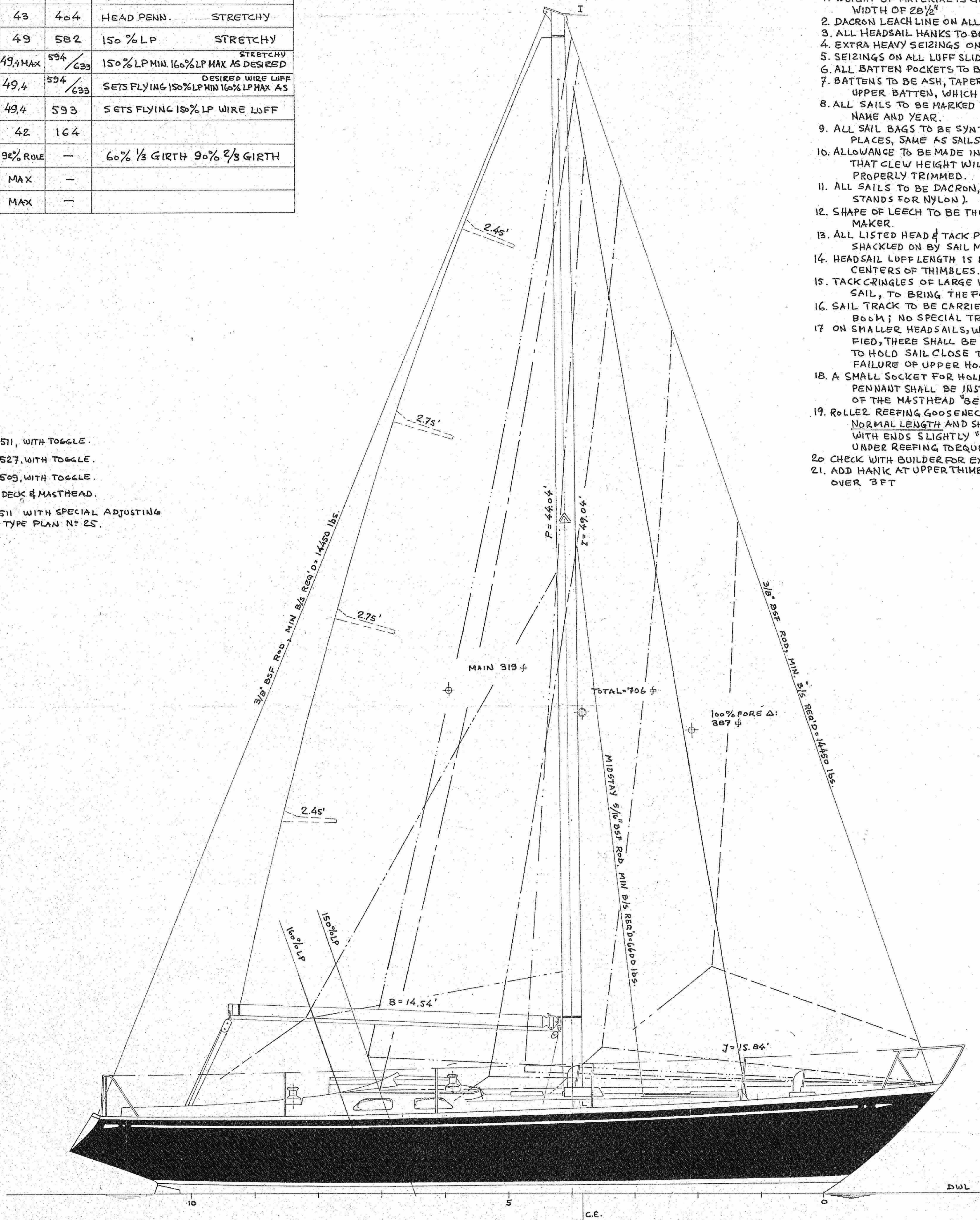
GENERAL NOTES

1. WEIGHT OF MATERIAL IS GIVEN IN OUNCES PER YARD, U.S. STD. WIDTH OF 28 1/2"
2. DACRON LEACH LINE ON ALL DACRON SAILS.
3. ALL HEADSAIL HANKS TO BE SIDE PULL TYPE.
4. EXTRA HEAVY SEIZINGS ON ALL HANKS AND SLIDES.
5. SEIZINGS ON ALL LUFF SLIDES TO BE HIDE COVERED.
6. ALL BATTEN POCKETS TO BE OFFSET TYPE, WITH LIGHT TIES.
7. BATTENS TO BE ASH, TAPERED AND VARNISHED, EXCEPT FOR UPPER BATTEN, WHICH SHALL BE FIBERGLASS.
8. ALL SAILS TO BE MARKED AT HEAD WITH SAIL NAME, BOAT NAME AND YEAR.
9. ALL SAIL BAGS TO BE SYNTHETIC AND TO BE MARKED IN THREE PLACES, SAME AS SAILS.
10. ALLOWANCE TO BE MADE IN LEACH DIMENSIONS OF GENOAS SO THAT CLEW HEIGHT WILL BE AS INDICATED WHEN SAIL IS PROPERLY TRIMMED.
11. ALL SAILS TO BE DACRON, UNLESS OTHERWISE NOTED ("N" STANDS FOR NYLON).
12. SHAPE OF LEECH TO BE THE RESPONSIBILITY OF THE SAIL MAKER.
13. ALL LISTED HEAD & TACK PENNANTS TO BE FURNISHED AND SHACKLED ON BY SAIL MAKER.
14. HEADSAIL LUFF LENGTH IS LENGTH OF LUFF WIRE BETWEEN CENTERS OF THIMBLES.
15. TACK C-RINGLES OF LARGE HEADSAILS TO BE MADE WITHIN THE SAIL, TO BRING THE FOOT AS LOW AS POSSIBLE.
16. SAIL TRACK TO BE CARRIED DOWN TO LOWEST POSITION OF BOOM; NO SPECIAL TRACK STOP TO BE INSTALLED.
17. ON SMALLER HEADSAILS, WHERE TACK PENNANTS ARE SPECIFIED, THERE SHALL BE A STRONG HOOK AT TACK OF SAIL, TO HOLD SAIL CLOSE TO STAY AND PREVENT PROGRESSIVE FAILURE OF UPPER HOOKS.
18. A SMALL SOCKET FOR HOLDING A BALANCED RACING WIND PENNANT SHALL BE INSTALLED NEAR THE AFTER END OF THE MASTHEAD "BEAK".
19. ROLLER REEFING GOOSENECK SLIDES SHALL BE DOUBLE NORMAL LENGTH AND SHALL BE HIGHLY POLISHED INSIDE WITH ENDS SLIGHTLY "BELLED" TO FACILITATE OPERATION UNDER REEFING TORQUE.
20. CHECK WITH BUILDER FOR EXACT ROLLER REEFING TACK OFFSET.
21. ADD HANK AT UPPER THIMBLE ON ALL HEAD PENNANTS OVER 3 FT



TURNBUCKLE LIST

- TOP SHROUD: TWO LEWMAR FIG. 511, WITH TOGGLE.
- LWR SHROUD: TWO LEWMAR FIG. 527, WITH TOGGLE.
- MID STAY: ONE LEWMAR FIG 509, WITH TOGGLE.
- HEAD STAY: NONE - TOGGLE AT DECK & MASTHEAD.
- BACK STAY: ONE LEWMAR FIG 511 WITH SPECIAL ADJUSTING HANDLES - SEE S&S TYPE PLAN N° 25.



SWAN 40

LENGTH OVERALL	39'-6 1/4"
LENGTH DWL	28'-6"
BEAM MAX	10'-10"
DRAFT	6'-4 1/2"

WHEEL STEERING

Plan No 0-81-085  
 DESIGN No 2025  
 SAIL PLAN  
 OF  
 28'-6" DWL AUXILIARY SLOOP  
 FOR NAUTOR ky

SCALE 3/8"=1'-0"  
 SPARKMAN & STEPHENS, INC.  
 79 MADISON AVE., NEW YORK N.Y. 10016

DWG No 2025-6T ALT 3  
 OCT 23 1969 PR / 44

ALT 'B' LUFF ON N° 1 AND N° 2 GENOAS AND REACHER CHANGED TO 49.4 PER Rod Stephens Febr 16-71 / 44  
 ALT 'A' CHANGED SPIN. STAYSAIL PER S&S MEMO OF JAN 15-70, NAUTOR JAN 30-70 / 44